

Token Graphs

Ruy Fabila-Monroy* David Flores-Peñaloza * Clemens Huemer ‡
 Ferran Hurtado † Jorge Urrutia * David R. Wood §

October 25, 2009

Abstract

For a graph G and integer $k \geq 1$, we define the token graph $F_k(G)$ to be the graph with vertex set all k -subsets of $V(G)$, where two vertices are adjacent in $F_k(G)$ whenever their symmetric difference is a pair of adjacent vertices in G . Thus vertices of $F_k(G)$ correspond to configurations of k indistinguishable tokens placed at distinct vertices of G , where two configurations are adjacent whenever one configuration can be reached from the other by moving one token along an edge from its current position to an unoccupied vertex. This paper introduces token graphs and studies some of their properties including: connectivity, diameter, cliques, chromatic number, Hamiltonian paths, and Cartesian products of token graphs.

1 Introduction

Many problems in mathematics and computer science are modeled by moving objects on the vertices of a graph according to certain prescribed rules. In “graph pebbling”, a pebbling step consists of removing two pebbles from a vertex and placing one pebble on an adjacent vertex; see [10] and [11] for surveys. Related pebbling games have been used to study rigidity [13, 14], motion planning [1, 19], and as models of computation [22]. In the “chip firing game”, a vertex v fires by distributing one chip to each of its neighbors (assuming the

*Instituto de Matemáticas, Universidad Nacional Autónoma de México (ruy@ciencias.unam.mx, dflores,urrutia@math.unam.mx).

†Departament de Matemàtica Aplicada II, Universitat Politècnica de Catalunya, Barcelona, Spain (ferran.hurtado@upc.edu). Partially supported by projects MEC MTM2009-07242 and Gen. Cat. DGR 2009SGR1040.

‡Departament de Matemàtica Aplicada IV, Universitat Politècnica de Catalunya, Barcelona, Spain (clemens.huemer@upc.edu). Partially supported by projects MEC MTM2009-07242 and Gen. Cat. DGR 2009SGR1040.

§Department of Mathematics and Statistics, The University of Melbourne, Melbourne, Australia (woodd@unimelb.edu.au). Supported by a QEII Research Fellowship from the Australian Research Council.

number of chips at v is at least its degree). This model has connections with matroids, the Tutte polynomial, and mathematical physics; see [18] for a survey.

In this paper we study a model in which k indistinguishable tokens move from vertex to vertex along the edges of a graph. This idea is formalized as follows. For a graph¹ G and integer $k \geq 1$, we define $F_k(G)$ to be the graph with vertex set $\binom{V(G)}{k}$, where two vertices A and B of $F_k(G)$ are adjacent whenever their symmetric difference $A \Delta B$ is a pair $\{a, b\}$ such that $a \in A$, $b \in B$ and $ab \in E(G)$. Thus the vertices of $F_k(G)$ correspond to configurations of k indistinguishable tokens placed at distinct vertices of G , where two configurations are adjacent whenever one configuration can be reached from the other by moving one token along an edge from its current position to an unoccupied vertex. We thus call $F_k(G)$ the k -token graph of G . See Figure 1 for an example.

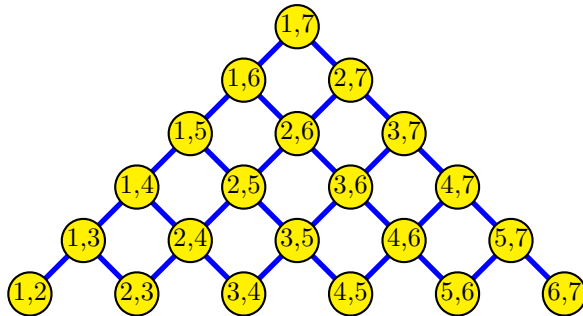


Figure 1: The 2-token graph of the 7-vertex path.

The aim of this paper is to introduce token graphs and study some of their properties. We make the following contributions: We prove tight lower and upper bounds on the diameter of token graphs (Section 3). We prove tight lower bounds on the connectivity of token graphs (Section 3). We characterize the cliques in token graphs in terms of the cliques in the original graph, and derive an exact formula for the clique-number of a token graph (Section 4). We present upper and lower bounds on the chromatic number of token graphs, and conclude that every token graph has chromatic number at least (roughly) half the chromatic number of the original graph and at most the chromatic number of the original graph (Section 5). We establish sufficient conditions for the existence or non-existence of a Hamiltonian path in various token graphs (Section 6). We show that token graphs contain certain Cartesian products as induced subgraphs (Section 7). Finally, we suggest some new research problems, mostly related to graph reconstruction (Section 8).

¹We consider undirected, simple and finite graphs; see [5]. A k -set is a set with cardinality k . For a set S , let $\binom{S}{k}$ be the set of all k -sets contained in S . Let $[a, b] := \{a, a + 1, \dots, b\}$ and $[n] := [1, n]$. For sets A and B , let $A \Delta B := (A \cup B) \setminus (A \cap B)$.

A key example in our study is when G is a complete graph. Then the token graph is called a Johnson graph, which is widely studied due to connections with coding theory. The Johnson graph $J(n, k)$ is the graph whose vertices are the k -subsets of an n -set, where two vertices A and B are adjacent whenever $|A \cap B| = k - 1$ (or alternatively, if $|A \Delta B| = 2$). Observe that $F_k(K_n) \simeq J(n, k)$. Many results in this paper generalize known properties of Johnson graphs.

2 Basic Properties

Throughout this paper, G is a graph with n vertices and k is a positive integer. To avoid trivial cases, we assume that $n \geq k + 1$. The number of vertices in $F_k(G)$ is:

$$|V(F_k(G))| = \binom{n}{k} .$$

To calculate the number of edges in $F_k(G)$, charge each edge AB of $F_k(G)$ to the unique edge ab of G , for which $A \Delta B = \{a, b\}$. The number of edges of $F_k(G)$ charged to ab is $\binom{n-2}{k-1}$. Hence

$$|E(F_k(G))| = \binom{n-2}{k-1} |E(G)| .$$

The neighborhood of each vertex A of $F_k(G)$ is

$$\{A \setminus \{v\} \cup \{w\} : v \in A, w \in V(G) \setminus A, vw \in E(G)\} .$$

Thus the degree of A in $F_k(G)$ equals the number of edges between A and $V(G) \setminus A$. Straight-forward bounds on the minimum and maximum degree of $F_k(G)$ follow.

With only one token, the resulting token graph is isomorphic to G . Thus

$$F_1(G) \simeq G . \tag{1}$$

Since two vertices A and B are adjacent in $F_k(G)$ if and only if $V(G) \setminus A$ and $V(G) \setminus B$ are adjacent in $F_{n-k}(G)$,

$$F_k(G) \simeq F_{n-k}(G) . \tag{2}$$

We sometimes use (2) to assume that $k \leq \frac{n}{2}$. Also note that (1) and (2) imply two known properties of the Johnson graph: $J(n, 1) \simeq K_n$ and $J(n, k) \simeq J(n, n - k)$.

At times, we study the token graph that arises when tokens are fixed at certain vertices. Given a set $X \subseteq V(G)$ with $|X| = r \leq k$, we define $F_k(G, X)$ to be the subgraph of $F_k(G)$ induced by the vertices of $F_k(G)$ that contain X as a subset. This definition can be interpreted as having r tokens fixed at X , and $k - r$ tokens moving on $G - X$. Hence

$$F_k(G, X) \simeq F_{k-r}(G - X) . \tag{3}$$

3 Connectivity and Diameter

In this section we establish tight bounds on the connectivity and diameter of $F_k(G)$ in terms of the same parameters in G .

The following notation will be helpful. Let A be a k -set in a graph G . Let P be an ab -path in G such that $a \in A$ and $b \notin A$. Let $A' := A \setminus \{a\} \cup \{b\}$. Say $A \cap P = \{v_1, \dots, v_q\}$ ordered by P (although not necessarily consecutive in P), where $v_1 = a$. Let $A \xrightarrow{P} A'$ be the path between A and A' in $F_k(G)$ corresponding to the following sequence of token moves: First move the token at v_q along P to b , then for $i = q - 1, q - 2, \dots, 1$ move the token at v_i along P to v_{i+1} . Each move is along a path containing no tokens. Thus these moves correspond to a path in $F_k(G)$. Observe that this path terminates at A' . Each edge in $A \xrightarrow{P} A'$ corresponds to an edge in P . Thus the length of $A \xrightarrow{P} A'$ equals the length of P .

Theorem 1. *Let G be a connected graph with diameter δ . Then $F_k(G)$ is connected with diameter at least $k(\delta - k + 1)$ and at most $k\delta$.*

Proof. We prove the upper bound by induction on $|A\Delta B|$ with the following hypothesis: “for all vertices A, B of $F_k(G)$ there is an AB -path in $F_k(G)$ of length at most $\frac{\delta}{2}|A\Delta B|$.” This implies that $F_k(G)$ is connected with diameter at most $k\delta$.

If $A\Delta B = \emptyset$ then $A = B$ and there is nothing to prove. Now assume that $A\Delta B \neq \emptyset$. Since G is connected there is a path P between some vertex $a \in A - B$ and $b \in B - A$. Thus $A \xrightarrow{P} A'$ is a path in $F_k(G)$ from A to $A' := A \setminus \{a\} \cup \{b\}$. Observe that $|A'\Delta B| = |A\Delta B| - 2$. By induction there is path between A' and B in $F_k(G)$ of length at most $\frac{\delta}{2}|A'\Delta B| = \frac{\delta}{2}|A\Delta B| - \delta$. Since the length of $A \xrightarrow{P} A'$ equals the length of P , which is at most δ , there is path between A and B in $F_k(G)$ of length at most $\frac{\delta}{2}|A\Delta B|$.

Now we prove the lower bound. Let x and y be vertices at distance δ in G . For $i \in [0, \delta]$, let V_i be the set of vertices in G at distance i from x . Thus $V_0 = \{x\}$ and $y \in V_\delta$. Let $d(v)$ be the distance between x and each vertex v .

Let a be the minimum index such that $|V_0 \cup \dots \cup V_a| \geq k$. Likewise, let b be the maximum index such that $|V_b \cup \dots \cup V_\delta| \geq k$. Let A be a subset of $V_0 \cup \dots \cup V_a$ such that $V_0 \cup \dots \cup V_{a-1} \subset A$. Let B be a subset of $V_b \cup \dots \cup V_\delta$ such that $V_{b+1} \cup \dots \cup V_\delta \subset B$.

Consider any path from A to B in $F_k(G)$. Each token initially at a vertex $v \in A$ is moved to some vertex $v' \in B$. Since edges in G are either within some set V_i or between sets V_i and V_{i+1} , at least $d(v') - d(v)$ moves are needed to move the token from v to v' . Thus $F_k(G)$ has diameter at least

$$\sum_{v \in A} (d(v') - d(v)) = \sum_{w \in B} d(w) - \sum_{v \in A} d(v) .$$

The first summation is minimized when $b = \delta - k + 1$ and $|V_j| = 1$ for all $j \geq b$. The second summation is maximized when $a = k - 1$ and $|V_i| = 1$ for all $i \leq a$. Thus $F_k(G)$ has diameter

at least

$$\sum_{j=\delta-k+1}^{\delta} j - \sum_{i=0}^{k-1} i = k(\delta - k + 1) .$$

□

Note that both bounds in Theorem 1 are achievable. If $P_{\delta+1}$ is the path on $\delta + 1$ vertices and $k \leq \delta + 1$, then $P_{\delta+1}$ has diameter δ and $F_k(P_{\delta+1})$ has diameter $k(\delta - k + 1)$. And, as illustrated in Figure 3, if T is the tree obtained by adding k vertices adjacent to each endpoint of $P_{\delta-1}$, then T has diameter δ and $F_k(T)$ has diameter δk .

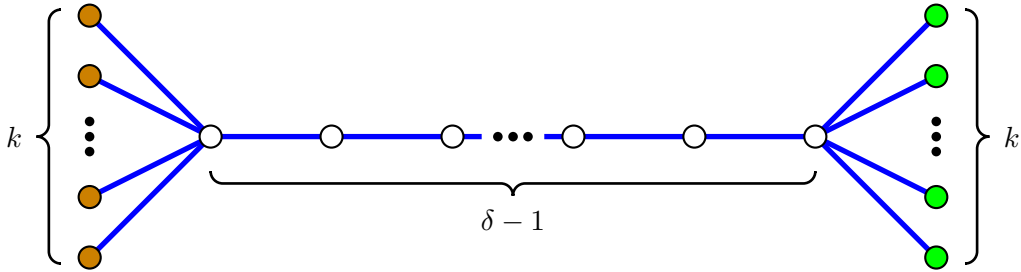


Figure 2: Configurations at distance δk in $F_k(T)$.

We now consider the connectivity of $F_k(G)$ when G is highly connected.

Lemma 2. *Let A be a k -set in a graph G . Let a and b be vertices of G such that $a \in A$ and $b \notin A$. Let P and Q be internally disjoint ab -paths in G . Then $A \xrightarrow{P} A'$ and $A \xrightarrow{Q} A'$ are internally disjoint paths in $F_k(G)$, where $A' = A \setminus \{a\} \cup \{b\}$.*

Proof. First suppose that $|P \cap A| \geq 2$. Let $P \cap A = \{v_1, \dots, v_p\}$ ordered by P , where $v_1 = a$. Consider an arbitrary internal vertex R of $A \xrightarrow{P} A'$. Then $|R \cap P| = p$ and R contains a vertex in the sub-path $(v_p, b]$ of P . Thus R does not contain $\{v_2, \dots, v_p\}$. On the other hand, $\{v_2, \dots, v_p\}$ is contained in every vertex of $A \xrightarrow{Q} A'$. Thus $A \xrightarrow{P} A'$ and $A \xrightarrow{Q} A'$ are internally disjoint, and we are done. Similarly if $|Q \cap A| \geq 2$.

Now assume that $P \cap A = Q \cap A = \{a\}$. Without loss of generality, P is not the edge ab . Thus $P \setminus \{a, b\} \neq \emptyset$. Thus every internal vertex of $A \xrightarrow{P} A'$ contains some vertex in $P \setminus \{a, b\}$. On the other hand, no internal vertex of $A \xrightarrow{Q} A'$ contains a vertex in $P \setminus \{a, b\}$. Thus $A \xrightarrow{P} A'$ and $A \xrightarrow{Q} A'$ are internally disjoint. □

We need the following technical result in the proof of Lemma 4 below.

Lemma 3. *Let H be a complete bipartite graph with colour classes Y and Z , where $|Y| < |Z|$. Suppose that the edges of H are coloured red and blue, such that each vertex in Y is incident*

to at most one red edge. Then H contains a set M of blue edges, such that each vertex in Y is incident to exactly one edge in M , and the union of the red edges and M is acyclic.

Proof. We proceed by induction on $|Y|$. The base case is trivial. Since there are more vertices in Z than red edges, some vertex $x \in Z$ is incident to no red edge. Let v be any vertex in Y . Let vw be the red edge incident to v (if any). Let $H' := (H - v) - x$. Let R and R' be the sets of red edges in H and H' respectively. By induction, there is a set M' of blue edges in H' , such that each vertex in $Y - v$ is incident to exactly one edge in M' , and $R' \cup M'$ is acyclic. Let $M := M' \cup \{vx\}$. Thus v (and every vertex in Y) is incident to exactly one edge in M . Since x is incident to no red edge, $M \cup R$ is obtained from $M' \cup R'$ by adding the edges xv and vw (if it exists). Thus $M \cup R$ is acyclic. \square

A *chord* of a path P in a graph G is an edge $vw \in E(G) \setminus E(P)$, such that both v and w are in P , but the endpoints of P are not v and w . Thus P is *chordless* if the subgraph of G induced by $V(P)$ has maximum degree at most 2.

Lemma 4. *Let G be a t -connected graph. Let A and B be vertices of $F_k(G)$ such that $|A \Delta B| = 2$. Then there are t internally disjoint AB -paths in $F_k(G)$. Moreover, if $t \geq k$ then there are $k(t - k + 1)$ internally disjoint AB -paths in $F_k(G)$.*

Proof. Let a and b be the vertices in $A \setminus B$ and $B \setminus A$ respectively. By Menger's Theorem, G contains internally disjoint ab -paths P_1, \dots, P_t . Thus $A \overrightarrow{P_1} B, \dots, A \overrightarrow{P_t} B$ are internally disjoint AB -paths in $F_k(G)$ by Lemma 2. This proves the first claim.

Now assume that $t \geq k + 1$. As illustrated in Figure 3, let $P_1, \dots, P_s, Q_1, \dots, Q_\ell$ be a set of internally disjoint ab -paths, such that $s + \ell \geq t$, where each of the paths P_1, \dots, P_s do not intersect $A \cap B$, and each of the paths Q_1, \dots, Q_ℓ do intersect $A \cap B$. Choose such a set of paths such that $s + \ell$ is maximal and each path is chordless.

Let C be the set of vertices in $A \cap B$ that intersect one of $Q_1 \cup \dots \cup Q_\ell$. Since Q_1, \dots, Q_ℓ are internally disjoint, each vertex in C is in exactly one of Q_1, \dots, Q_ℓ . Let D be the set of vertices in $A \cap B$ that do not intersect $Q_1 \cup \dots \cup Q_\ell$. Thus C and D partition $A \cap B$. Hence $|C| + |D| = k - 1$ and $\ell \leq |C| \leq k - 1$ and

$$s \geq t - \ell \geq t - |C| = t - (k - 1 - |D|) = t - k + 1 + |D| .$$

The AB -paths that we construct in $F_k(G)$ are of three types. The first and second types are straightforward. By Lemma 2,

$$A \overrightarrow{P_1} B, \dots, A \overrightarrow{P_s} B, A \overrightarrow{Q_1} B, \dots, A \overrightarrow{Q_\ell} B$$

are internally disjoint AB -paths in $F_k(G)$, called *type-P* and *type-Q* paths respectively. Note that since P_i avoids $A \cap B$, the path $A \overrightarrow{P_i} B$ in $F_k(G)$ corresponds to the sequence of token configurations obtained by simply moving the token from a along P_i to b .

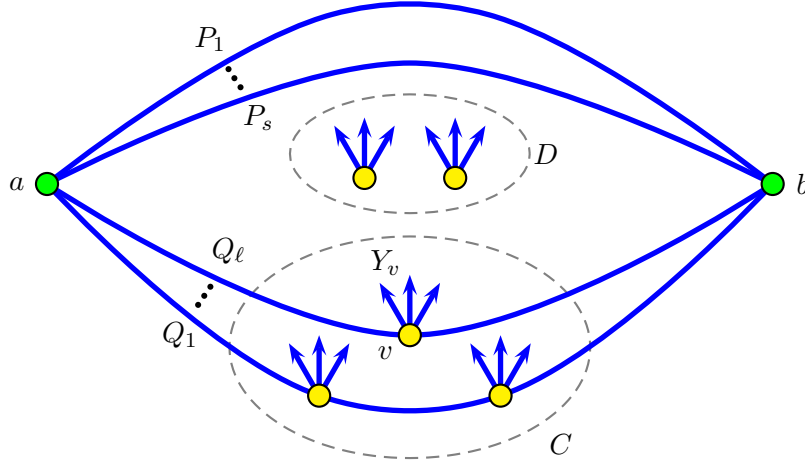


Figure 3: Illustration for the proof of Lemma 4.

For each vertex $v \in A \cap B$, we construct a set of *type-R* paths in $F_k(G)$ between A and B as follows.

First consider $v \in C$. Then $v \in Q_i$ for exactly one $i \in [\ell]$. Let $Y_v := N_G(v) \setminus (A \cap B) \setminus Q_i$. Since G is t -connected, $|N_G(v)| = \deg_G(v) \geq t$. Since Q_i is chordless, v has only two neighbours in Q_i . Since $|A \cap B| = k - 1$ and $v \in (A \cap B) - N_G(v)$, we have $|Y_v| \geq t - (k - 2) - 2 = t - k$.

Now consider $v \in D$. Let $Y_v := N_G(v) \setminus (A \cup B)$. Since G is t -connected, $|N_G(v)| = \deg_G(v) \geq t$. We have $|A \cup B| = k + 1$ and $v \in (A \cup B) \setminus N_G(v)$. Moreover, since $s + \ell$ is maximal, the path (a, v, b) is not in G . Thus $a \notin N_G(v)$ or $b \notin N_G(v)$. Hence $|Y_v| \geq t - (k - 1) = t - k + 1$.

Now let Y_v be a subset of itself with exactly $t - k$ vertices if $v \in C$, and exactly $t - k + 1$ vertices if $v \in D$. Note that $Y_v \neq \emptyset$ since $t \geq k + 1$. And by construction, $a \notin Y_v$ and $b \notin Y_v$.

Let H_v be the complete bipartite graph with colour classes Y_v and $[s]$. Colour the edges of H_v as follow. If $y \in P_i$ for some $y \in Y_v$ and $i \in [s]$, then colour the edge yi in H_v red. Colour every other edge in H_v blue. Since each vertex in Y_v is in at most one of P_1, \dots, P_s , each vertex in Y_v is incident to at most one red edge in H_v . We now verify that Lemma 3 is applicable to H_v with $Y = Y_v$ and $Z = [s]$. If $v \in C$ then $|Z| = s \geq t - k + 1 > t - k = |Y_v|$. If $v \in D$ then $|D| \geq 1$ and $|Z| = s \geq t - k + 1 + |D| > t - k + 1 = |Y_v|$. In both cases, Lemma 3 is applicable.

Thus there is set M_v of blue edges in H_v , such that each vertex in Y_v is incident to exactly one edge in M_v , and the union of the red edges and M is an acyclic subgraph of H_v . Note that $|M_v| = |Y_v|$. For each edge $yi \in M_v$, let $R\langle v, y \rangle$ be the *type-R* path in $F_k(G)$ corresponding to the following token moves (where all the tokens at $(A \cap B) \setminus \{v\}$ are

stationary):

- (1) move the token at v to y ,
- (2) move the token at a along the path P_i to b ,
- (3) move the token at y back to v .

We now prove that the type- R paths are internally disjoint. Suppose to the contrary that $R\langle v, y \rangle$ and $R\langle v', y' \rangle$ share a common internal vertex, for some $(v, y) \neq (v', y')$. Thus yi is an edge of M_v , and $y'i'$ is an edge in $M_{v'}$, for some $i, i' \in [s]$. Each internal vertex in $R\langle v, y \rangle$ consists of $(A \cap B) \setminus \{v\} \cup \{y\}$ plus some vertex in P_i . Hence

$$(A \cap B) \setminus \{v\} \cup \{y, x\} = (A \cap B) \setminus \{v'\} \cup \{y', x'\}$$

for some vertices x in P_i and $x' \in P_{i'}$. Since $A \cap B \cap Y_{v'} = \emptyset$ and $y' \in Y_{v'}$, we have $y' \notin (A \cap B) \setminus \{v\}$, implying $y' \in \{x, y\}$. Since $A \cap B \cap P_{i'} = \emptyset$ and $x' \in P_{i'}$, we have $x' \notin (A \cap B) \setminus \{v\}$, implying $x' \in \{x, y\}$. Thus $\{x', y'\} = \{x, y\}$, implying $(A \cap B) \setminus \{v\} = (A \cap B) \setminus \{v'\}$ and $v = v'$. Hence yi and $y'i'$ are edges in the same set M_v . Since each vertex in Y_v is incident to exactly one edge in M_v , we have $y \neq y'$. Thus $x = y'$ and $y = x'$, implying $y \in P_{i'}$ and $y' \in P_i$. Hence, in H_v , the edges yi' and $y'i$ are both red. Since yi and $y'i'$ are blue edges, $i \neq i'$. Thus (y, i, y', i') is a blue-red-blue-red cycle in H_v with both blue edges in M_v . This contradiction proves that the type- R paths are pairwise disjoint.

We now prove that each type- P path is internally disjoint from each type- R path. Suppose on the contrary that some path $A \overrightarrow{P_i} B$ intersects some path $R\langle v, y \rangle$ at an internal vertex in common. Now v is in every internal vertex of $A \overrightarrow{P_i} B$ (that is, the token at v never moves in this sequence). On the other hand, v is in no internal vertex of $R\langle v, y \rangle$. This contradiction proves that each type- P path is internally disjoint from each type- R path.

We now prove that each type- Q path is internally disjoint from each type- R path. Suppose on the contrary that some path $A \overrightarrow{Q_i} B$ intersects some path $R\langle v, y \rangle$ at an internal vertex W in common. Let yj be the blue edge in M_v , where $j \in [s]$. By the construction of H_v , we have $y \notin P_j$. If $v \notin Q_i$ then v is in every internal vertex of $A \overrightarrow{Q_i} B$ (that is, the token at v never moves in this sequence). On the other hand, v is in no internal vertex of $R\langle v, y \rangle$. Thus $v \in Q_i$ and $v \in C$. Since $y \in Y_v$ and $Y_v \cap Q_i = \emptyset$, we have $y \notin Q_i$. Similarly, since $y \in Y_v$ and $Y_v \cap A \cap B = \emptyset$, we have $y \notin A \cap B$. Every internal vertex of $R\langle v, y \rangle$ contains y . But every internal vertex of $A \overrightarrow{Q_i} B$ is contained in $(A \cap B) \cup Q_i$. This contradiction proves that each type- Q path is internally disjoint from each type- R path.

We have s type- P paths and ℓ type- Q paths. For each $v \in C$ we have $t - k$ type- R paths, and for each $v \in D$ we have $t - k + 1$ type- R paths. In total, the number of AB -paths in

$F_k(G)$ is

$$\begin{aligned}
& s + \ell + |C|(t - k) + |D|(t - k + 1) \\
&= s + \ell + (|C| + |D|)(t - k) + |D| \\
&= s + \ell + (k - 1)(t - k) + |D| \\
&\geq t + (k - 1)(t - k) \\
&= k(t - k + 1) .
\end{aligned}$$

Therefore we have $k(t - k + 1)$ pairwise internally disjoint AB -paths in $F_k(G)$. \square

Theorem 5. *If G is t -connected, then $F_k(G)$ is t -connected for all $k \geq 1$.*

Proof. By (2), we may assume that $k \leq \frac{n}{2}$. Let \mathcal{C} be a minimum (vertex) cut-set of $F_k(G)$. We will prove that $|\mathcal{C}| \geq t$, implying $F_k(G)$ is t -connected.

Let A and B be vertices in distinct components of $F_k(G) - \mathcal{C}$, such that $|A\Delta B|$ is minimum. If $|A\Delta B| = 2$ then by Lemma 4, there are t internally disjoint AB -paths in $F_k(G)$, implying $|\mathcal{C}| \geq t$. Now assume that $|A\Delta B| = 2r \geq 4$.

Let $A \setminus B = \{a_1, \dots, a_r\}$ and $B \setminus A = \{b_1, \dots, b_r\}$. For each $i \in [r]$ and each vertex $x \in V(G) \setminus (A \cup B)$, define $A_{i,x} := A \setminus \{a_i\} \cup \{x\}$ and $B_{i,x} := B \setminus \{b_i\} \cup \{x\}$. Suppose that $A_{i,x} \notin \mathcal{C}$ and $B_{j,x} \notin \mathcal{C}$ for some i, j and x . Since $A\Delta A_{i,x} = \{a_i, x\}$, by the minimality of $|A\Delta B|$, A and $A_{i,x}$ are in the same component of $F_k(G) - \mathcal{C}$. Similarly, B and $B_{j,x}$ are in the same component of $F_k(G) - \mathcal{C}$. Also $A_{i,x}\Delta B_{j,x} = (A\Delta B) \setminus \{a_i, b_j\}$, implying $|A_{i,x}\Delta B_{j,x}| = 2(r - 1)$. Thus $A_{i,x}$ and $B_{j,x}$ are in the same component of $F_k(G)$. Hence A and B are in the same component of $F_k(G)$. This contradiction implies that at least one of $A_{i,x}$ and $B_{j,x}$ is in \mathcal{C} for all i, j and x .

Hence, for each $x \in V(G) \setminus (A \cup B)$, the set \mathcal{C} includes all of $\{A_{i,x} : i \in [r]\}$ or all of $\{B_{j,x} : j \in [r]\}$. This gives $r(n - k - r)$ vertices in \mathcal{C} (since $|A \cup B| = k + r$).

Now for each $i \in [r]$ and $j \in [r]$, let $A_{i,j} := A \setminus \{a_i\} \cup \{b_j\}$ and $B_{i,j} := B \setminus \{b_i\} \cup \{a_j\}$. There are $2r^2$ such sets. Suppose that $A_{i,j} \notin \mathcal{C}$. Thus A and $A_{i,j}$ are in the same component of $F_k(G) - \mathcal{C}$ since $A\Delta A_{i,j} = \{a_i, b_j\}$. And B and $A_{i,j}$ are in the same component of $F_k(G) - \mathcal{C}$ since $|B\Delta A_{i,j}| = 2(r - 1)$. Hence A and B are in the same component of $F_k(G) - \mathcal{C}$. This contradiction proves that $A_{i,j} \in \mathcal{C}$. Similarly, $B_{i,j} \in \mathcal{C}$. These vertices were not counted in \mathcal{C} earlier. Thus, since $r \geq 2$ and $k \leq \frac{n}{2}$,

$$|\mathcal{C}| \geq r(n - k - r) + 2r^2 > r(n - k) \geq 2(n - k) \geq n > t .$$

Therefore $F_k(G)$ is t -connected. \square

Theorem 5 is best possible when $t \leq k$. Let G be a t -connected graph containing an edge cut S of t edges, such that the union A of some components of $G - S$ has exactly k vertices

(for example, take a matching of t edges between two disjoint copies of K_k). Then A has degree t in $F_k(G)$. Thus $F_k(G)$ has connectivity exactly t . We now prove a stronger bound for large t and sufficiently large graphs.

Theorem 6. *If G is t -connected and $t \geq k$ and $n \geq \frac{1}{2}kt$, then $F_k(G)$ is $k(t-k+1)$ -connected.*

Proof. Let \mathcal{C} be a minimum (vertex) cut-set of $F_k(G)$. Let A and B be vertices in distinct components of $F_k(G) - \mathcal{C}$, such that $|A\Delta B|$ is minimum. If $|A\Delta B| = 2$ then by the second part of Lemma 4, there are $k(t-k+1)$ internally disjoint AB -paths in $F_k(G)$, implying $|\mathcal{C}| \geq k(t-k+1)$. Now assume that $|A\Delta B| = 2r \geq 4$. As in the proof of Theorem 5, since $r \geq 2$ and $n \geq \frac{1}{2}kt$ and $k^2 - 3k + 4 \geq 0$.

$$|\mathcal{C}| \geq r(n - k - r) + 2r^2 = r(n - k + r) \geq 2(n - k + 2) \geq kt - 2k + 4 \geq k(t - k + 1).$$

Thus $F_k(G)$ is $k(t-k+1)$ -connected. □

The lower bound on the connectivity of $F_k(G)$ in Theorem 6 is best possible. For example, if G is t -regular and contains a k -clique X , then X has degree $k(t-k+1)$ in $F_k(G)$, implying $F_k(G)$ has connectivity at most $k(t-k+1)$. As a concrete example, $G = K_{t+1}$ is t -connected, t -regular, and contains a k -clique. Thus the Johnson graph $J(t+1, k) \simeq F_k(K_{t+1})$ has connectivity at most $k(t-k+1)$. In fact, the connectivity of $J(t+1, k)$ equals $k(t-k+1)$ [4, 12]. We conjecture the following generalization:

Conjecture 1. *If G is a t -connected graph and $t \geq k$, then $F_k(G)$ is $k(t-k+1)$ -connected.*

Note that Conjecture 1 with $k = 2$ can be proved using the same method as the proof of Theorem 5 (since $|\mathcal{C}| \geq r(n - k - r) + 2r^2 = 2(n - 2 - 2) + 8 = 2n > 2t > k(t - k + 1)$).

4 Cliques

A *clique* in a graph G is a set of pairwise adjacent vertices in G . The *clique number* $\omega(G)$ of G is the maximum cardinality of a clique in G . In this section we characterize the cliques in $F_k(G)$, and derive an exact formula for the clique-number of $F_k(G)$. These results are well known in the case of Johnson graphs [3].

Lemma 7. *Let A, B, C be three pairwise adjacent vertices in $F_k(G)$. Then either $B \cap C \subset A$ or $A \subset B \cup C$ (but not both).*

Proof. Suppose on the contrary that $B \cap C \not\subset A$ and $A \not\subset B \cup C$; that is, there are vertices $x \in (B \cap C) \setminus A$ and $a \in A \setminus (B \cup C)$. Since A and B are adjacent in $F_k(G)$ and $a \in A \setminus B$ and $x \in B \setminus A$, we have $A\Delta B = \{a, x\}$. Similarly, $A\Delta C = \{a, x\}$. Thus $B \cup C \cup \{a\} \setminus \{x\} \subseteq A$.

Since B and C are adjacent in $F_k(G)$, we have $|B \cup C| = k + 1$. Thus $|A| \geq k + 1$, which is the desired contradiction. Thus $A \subset B \cup C$ or $B \cap C \subset A$.

Now suppose that $A \subset B \cup C$ and $B \cap C \subset A$. Since B and C are adjacent, $|B \cap C| = k - 1$ and $|B \cup C| = k + 1$. Since $|A| = k$, we have $A = B$ or $A = C$, which is the desired contradiction. Thus $A \not\subset B \cup C$ or $B \cap C \not\subset A$. \square

We now use Lemma 7 to characterize cliques in $F_k(G)$.

Theorem 8. *Let X be a set of vertices in $F_k(G)$. Then X is a clique of $F_k(G)$ if and only if there is a clique K of G and a set $S \subseteq V(G)$, such that $K \cap S = \emptyset$ and either*

- (a) $X = \{S \cup \{v\} : v \in K\}$ and $|S| = k - 1$, or
- (b) $X = \{(S \cup K) \setminus \{v\} : v \in K\}$ and $|S| + |K| = k + 1$.

Proof. The “if” direction is immediate. To prove the “only if” direction, let X be an arbitrary clique of $F_k(G)$.

First suppose that $|X| = 2$. Then $X = \{A, B\}$ for some edge AB of $F_k(G)$. Let $S := A \cap B$ and $K := A \triangle B$. Then X satisfies (a). In fact, it also satisfies (b).

Now assume that $|X| = p \geq 3$. Say $X = \{A_1, \dots, A_p\}$. For distinct $i, j \in [3, p]$, the two options given by Lemma 7 for A_1, A_2, A_i and A_1, A_2, A_j are incompatible. That is, if say $A_i \subset A_1 \cup A_2$ but $A_1 \cap A_2 \subset A_j$, then $|A_i \triangle A_j| = 4$, implying A_i and A_j are not adjacent in $F_k(G)$. Thus one of the following cases apply:

- $A_1 \cap A_2 \subset A_i$ for all $i \in [p]$: Let $S := A_1 \cap A_2$. Since $|S| = k - 1$, each A_i contains a vertex v_i such that $A_i = S \cup \{v_i\}$. Thus $A_i \triangle A_j = \{v_i, v_j\}$ for distinct $i, j \in [p]$. Since A_i and A_j are adjacent in $F_k(G)$, v_i and v_j are adjacent in G . Thus $K := \{v_i : i \in [p]\}$ is a clique in G , and $X = \{S \cup \{v\} : v \in K\}$. Hence X satisfies (a).
- $A_i \subset A_1 \cup A_2$ for all $i \in [p]$: Since $|A \cup B| = k + 1$, each A_i contains a vertex v_i such that $A_i = (A_1 \cup A_2) \setminus \{v_i\}$. Thus $A_i \triangle A_j = \{v_i, v_j\}$ for distinct $i, j \in [p]$. Since A_i and A_j are adjacent in $F_k(G)$, v_i and v_j are adjacent in G . Thus $K := \{v_i : i \in [p]\}$ is a clique in G . Moreover, $X = \{(S \cup K) \setminus \{v\} : v \in K\}$ where $S := (A_1 \cup A_2) \setminus K$. Hence X satisfies (b).

This completes the proof. Note that in both cases $S = \bigcap_i A_i$ and $K = \bigcup_i A_i \setminus S$. \square

We obtain the following formula for the clique-number of a token graph.

Theorem 9. $\omega(F_k(G)) = \min\{\omega(G), \max\{n - k + 1, k + 1\}\}$.

Proof. We first prove the upper bound on $\omega(F_k(G))$. Let X be a clique in $F_k(G)$ with $\omega(F_k(G))$ vertices. Thus X satisfies (a) or (b) in Theorem 8. In case (a), $n \geq |S| + |K| = k - 1 + |X|$. In case (b), $|X| = |K| \leq |S| + |K| = k + 1$. Thus $|X| \leq n - k + 1$ or $|X| \leq k + 1$, implying $|X| \leq \max\{n - k + 1, k + 1\}$. In both cases, $|X| = |K| \leq \omega(G)$. Therefore $\omega(F_k(G)) = |X| \leq \min\{\omega(G), \max\{n - k + 1, k + 1\}\}$.

We now prove the lower bound on $\omega(F_k(G))$. Let K be a clique in G with $\omega(G)$ vertices. Consider the following two constructions of cliques in $F_k(G)$:

- Let K' be a subset of K with $\min\{\omega(G), n - k + 1\}$ vertices. Thus $|V(G) \setminus K'| \geq k - 1$. Let S be a subset of $V(G) \setminus K'$ with $k - 1$ vertices. Thus $\{S \cup \{v\} : v \in K'\}$ is a clique in $F_k(G)$ with $|K'|$ vertices. Hence $\omega(F_k(G)) \geq \min\{\omega(G), n - k + 1\}$.
- Let K' be a subset of K with $\min\{\omega(G), k + 1\}$ vertices. Since $n \geq k + 1$, there is a subset S of $V(G) \setminus K'$ with $(k + 1) - |K'|$ vertices. Thus $\{(S \cup K') \setminus \{v\} : v \in K'\}$ is a clique in $F_k(G)$ with $|K'|$ vertices. Hence $\omega(F_k(G)) \geq \min\{\omega(G), k + 1\}$.

Therefore $\omega(F_k(G)) \geq \max\{\min\{\omega(G), n - k + 1\}, \min\{\omega(G), k + 1\}\}$, which equals $\min\{\omega(G), \max\{n - k + 1, k + 1\}\}$. \square

Corollary 10. *Assuming $k \leq \frac{n}{2}$, we have $\omega(F_k(G)) = \min\{\omega(G), n - k + 1\}$.*

For Johnson graphs, Corollary 10 amounts to a special case of the Erdős-Ko-Rado theorem, which states that if $0 < t < k$ and \mathcal{F} is a family of k -subsets of an n -set and $n \geq n_0(k, t)$ and the intersection of any two sets in \mathcal{F} has cardinality at least t , then $|\mathcal{F}| \leq \binom{n-t}{k-t}$. Wilson [25] proved this result with $n_0(k, t) = (t + 1)(k - t + 1)$, which is best possible. Observe that a clique in $J(n, k)$ is such a family \mathcal{F} for $t = k - 1$. In this case, Wilson's Theorem states that $\omega(J(n, k)) \leq n - k + 1$ whenever $n \geq 2k$.

5 Chromatic Number

In this section we study the chromatic number of $F_k(G)$ in terms of the chromatic number of G . Our first result is an upper bound on $\chi(F_k(G))$.

Theorem 11. $\chi(F_k(G)) \leq \chi(G)$.

Proof. Let $c : V(G) \rightarrow \{0, 1, \dots, \chi(G) - 1\}$ be a coloring of G . To each vertex A of $F_k(G)$, assign the color

$$c'(a) := \left(\sum_{x \in A} c(x) \right) \pmod{\chi(G)} .$$

Let A and B be two adjacent vertices in $F_k(G)$. Thus $A\Delta B = \{a, b\}$ for some edge ab of G . Suppose on the contrary that $c'(A) = c'(B)$. Thus

$$\sum_{x \in A} c(x) \equiv \sum_{y \in B} c(y) \pmod{\chi(G)} .$$

Since $A\Delta B = \{a, b\}$, we have $c(a) \equiv c(b) \pmod{\chi(G)}$. Hence $c(a) = c(b)$, and c is not a coloring of G . This contradiction proves that c' is a coloring of $F_k(G)$. \square

Note that Theorem 11 holds with equality whenever $\omega(G) = \chi(G)$ and $n \geq \omega(G) + k - 1$, in which case $\chi(F_k(G)) \geq \omega(F_k(G)) \geq \omega(G) = \chi(G)$ by Theorem 9.

We now consider lower bounds on the chromatic number of token graphs. By Theorem 9, we have $\chi(F_k(G)) \geq \omega(F_k(G)) = \min\{\omega(G), \max\{n - k + 1, k + 1\}\}$. But we can obtain qualitatively stronger lower bounds in terms of $\chi(G)$ as follows. First consider the case when $F_k(G)$ is bipartite.

Proposition 12. *If $F_k(G)$ is bipartite for some $k \geq 1$, then $F_\ell(G)$ is bipartite for all $\ell \geq 1$.*

Proof. By Theorem 11, it suffices to prove that if $F_k(G)$ is bipartite then G is bipartite. Equivalently, we prove that if G is not bipartite then $F_k(G)$ is not bipartite. Suppose that G is not bipartite. Thus G contains an odd cycle $C = (v_1, \dots, v_p)$. First suppose that $p \geq k + 1$. Hence

$$\begin{aligned} & \{v_1, v_2, \dots, v_{k-2}, v_{k-1}, v_k\} \{v_1, v_2, \dots, v_{k-2}, v_{k-1}, v_{k+1}\} \{v_1, v_2, \dots, v_{k-2}, v_{k-1}, v_{k+2}\} \cdots \\ & \{v_1, v_2, \dots, v_{k-2}, v_{k-1}, v_p\} \{v_1, v_2, \dots, v_{k-2}, v_k, v_p\} \{v_1, v_2, \dots, v_{k-1}, v_k, v_p\} \cdots \\ & \{v_1, v_3, \dots, v_{k-1}, v_k, v_p\} \{v_2, v_3, \dots, v_{k-1}, v_k, v_p\} \end{aligned}$$

is a p -cycle in $F_k(G)$. Thus $F_k(G)$ is not bipartite. Now assume that $p \leq k$. Let A be a set of $k - p + 1$ vertices in $V(G) \setminus C$ (which exist since $n \geq k + 1$). Then $F_k(G, A) \simeq F_{p-1}(G - A)$ by (3). Since C is contained in $G - A$, by the above construction, there is an odd cycle in $F_{p-1}(G - A)$. Thus there is an odd cycle in $F_k(G, A)$, which is a subgraph of $F_k(G)$. Thus $F_k(G)$ is not bipartite. \square

We have the following general lower bound on $\chi(F_k(G))$.

Theorem 13. $\chi(F_k(G)) \geq \frac{n-k+2}{n} \chi(G) - 1$.

Proof. The result holds for $k = 1$ since $F_1(G) \simeq G$. Now assume that $k \geq 2$. Let $V_1, \dots, V_{\chi(G)}$ be the color classes in a coloring of G with $\chi(G)$ colors. Assume that $|V_1| \geq \dots \geq |V_{\chi(G)}|$. Thus for each index m ,

$$\sum_{i=1}^m |V_i| \geq \frac{mn}{\chi(G)} . \tag{4}$$

Let m be the minimum index such that $\sum_{i=1}^m |V_i| \geq k - 1$. Thus (4) implies that

$$\frac{(m-1)n}{\chi(G)} \leq \sum_{i=1}^{m-1} |V_i| \leq k - 2 . \quad (5)$$

Let X be a subset of $\bigcup_{i=1}^m V_i$ of cardinality $k - 1$. Since $G[X]$ is m -colorable,

$$\chi(G) \leq \chi(G[X]) + \chi(G - X) \leq m + \chi(G - X) .$$

By (3), $G - X \simeq F_1(G - X) \simeq F_k(G, X)$, which is a subgraph of $F_k(G)$. Thus

$$\chi(G) \leq m + \chi(F_k(G, X)) \leq m + \chi(F_k(G)) .$$

By (5),

$$\chi(G) \leq \frac{k-2}{n} \chi(G) + 1 + \chi(F_k(G)) .$$

The result follows. □

Theorem 13 and (2) imply the following lower bound on $\chi(F_k(G))$ independent of k .

Theorem 14. $\chi(F_k(G)) \geq (\frac{1}{2} + \frac{2}{n})\chi(G) - 1$ for all $k \geq 1$.

Theorem 14 gives a lower bound of roughly $\frac{1}{2}\chi(G)$ on $\chi(F_k(G))$. However, the best upper bound example we know of is $\chi(F_k(G)) \leq \chi(G) - 2$, which is achieved for $G = K_n$ and $k = 3$, for all $n > 7$ and $n \equiv 1 \pmod{6}$ or $n \equiv 3 \pmod{6}$; see [15, 17, 24]. In this case, an independent set in $J(n, 3)$ is a Steiner triple system. Etzion and Bitan [6] give some other values of n and k for which $\chi(J(n, k)) < n$. These results suggest the following question, which is open even for Johnson graphs.

Open Problem 1. *Does there exist a constant $c > 0$ such that $\chi(F_k(G)) \geq \chi(G) - c$ for every graph G and integer $k \geq 1$?*

6 Hamiltonian Paths

In this section we study conditions for the existence or non-existence of Hamiltonian paths in token graphs. First note that all Johnson graphs are Hamiltonian [9]. Now consider the case when $G = P_n$, the path on n vertices; see Figure 1. A Hamiltonian path in $F_k(P_n)$ would correspond to a Gray code of adjacent transpositions for the set of binary strings of length n with k ones. This Gray code exists if and only if n is even and k is odd; see [20, p. 133] or [21]. Thus $F_k(P_n)$ contains a Hamiltonian path if and only if n is even and k is odd. Hence:

Theorem 15. *If a graph G contains a Hamiltonian path and n is even and k is odd, then $F_k(G)$ contains a Hamiltonian path.*

Note that the existence of a Hamiltonian cycle or path in G does not imply that $F_k(G)$ contains a Hamiltonian cycle or path. For example, C_4 is Hamiltonian, but $F_2(C_4) \simeq K_{2,4}$ does not even contain a Hamiltonian path. More generally, if G is bipartite and $\binom{n}{k}$ is odd², then $F_k(G)$ is bipartite by Theorem 11, but $F_k(G)$ is not Hamiltonian, since every bipartite Hamiltonian graph has even order. Even if $F_k(G)$ has even order, it may not contain a Hamiltonian path. For example, let V_1 and V_2 be the color classes of $K_{m,m}$. Then $F_k(K_{m,m})$ is also bipartite by Theorem 11, and the color classes are

$$\begin{aligned} W_1 &= \{A \in V(F_k(K_{m,m})) : |A \cap V_1| \text{ is even}\} \text{ and} \\ W_2 &= \{A \in V(F_k(K_{m,m})) : |A \cap V_1| \text{ is odd}\} . \end{aligned}$$

Thus, by an identity of Gould [7] (see [23, p. 61]),

$$|W_1| - |W_2| = \sum_{i=0}^k (-1)^i \binom{m}{i} \binom{m}{k-i} = \begin{cases} 0 & \text{if } k \text{ is odd} \\ (-1)^{k/2} \binom{m}{k/2} & \text{if } k \text{ is even} . \end{cases}$$

Hence for even k , $||W_1| - |W_2|| > 2$ and therefore $F_k(K_{m,m})$ does not contain a Hamiltonian path. On the other hand, $F_k(K_{m,m})$ contains a Hamiltonian path for odd k by Theorem 15.

7 Cartesian Product

The Cartesian product $G \square H$ of two graphs G and H is the graph with vertex set $V(G) \times V(H)$, where two vertices (g, h) and (g', h') are adjacent in $G \square H$ whenever $g = g'$ and $hh' \in E(H)$, or $h = h'$ and $gg' \in E(G)$. The Cartesian product of $m \geq 3$ graphs G_1, \dots, G_m is defined recursively as $G_1 \square (G_2 \square \dots \square G_m)$. We now show that certain induced subgraphs in a token graph are in fact Cartesian products.

Let H and H' be two disjoint induced subgraphs of a graph G . Let r and s be integers such that $1 \leq r \leq |V(H)|$ and $1 \leq s \leq |V(H')|$ and $r + s = k$. Observe that the subgraph of $F_k(G)$ induced by all k -sets A of G such that $|A \cap V(H)| = r$ and $|A \cap V(H')| = s$ is isomorphic to $F_r(H) \square F_s(H')$. Thus $F_r(H) \square F_s(H')$ is an induced subgraph of $F_k(G)$. We conclude:

Theorem 16. *If H_1, \dots, H_m are pairwise disjoint induced subgraphs of a graph G , then for all integers s_1, \dots, s_m such that $1 \leq s_i \leq |V(H_i)|$ and $\sum s_i = k$, the graph $F_{s_1}(H_1) \square \dots \square F_{s_m}(H_m)$ is an induced subgraph of $F_k(G)$.*

²While most binomial coefficients are even, there are infinitely many non-trivial binomial coefficients that are odd; see [8, 16].

In the case $k = 2$, Theorem 16 has the following interpretation:

Corollary 17. *Let H and H' be two disjoint induced subgraphs of G . Then $H \square H'$ is an induced subgraph of $F_2(G)$.*

Corollary 17 implies, for example, that the $\lfloor \frac{n}{2} \rfloor \times \lceil \frac{n}{2} \rceil$ grid graph is an induced subgraph of $F_2(P_n)$; see Figure 1. This shows that $F_2(G)$ can have unbounded treewidth even for trees G . Moreover, $F_2(G)$ can have unbounded clique minors even for trees G , since $F_2(K_{1,n})$ is isomorphic to K_n with each edge subdivided once.

8 Open Problems

We now consider some open problems regarding $F_k(G)$ that are related to graph reconstruction. Does a given token graph uniquely determine the original graph? We conjecture that this is indeed so.

Conjecture 2. *Let G and H be two graphs, such that $F_k(G) \simeq F_k(H)$ for some k . Then $G \simeq H$.*

This conjecture is related to the well known Reconstruction Conjecture; see [2] for a survey. The *deck* of a graph G is the multiset of unlabeled graphs $\{G - v : v \in V(G)\}$. The Reconstruction Conjecture states that a graph is uniquely determined up to isomorphism by its deck. Similarly, Conjecture 2 states that a graph is uniquely determined up to isomorphism by one of its token graphs. Given that each element of the deck of G is an induced subgraph of $F_2(G)$, it is possible that progress in this direction will shed light on the Reconstruction Conjecture.

We conclude the paper with two definitions: For $r \in [k]$, let $F_{k,r}(G)$ be the graph with vertex set $\binom{V(G)}{k}$, where two vertices A and B in $F_{k,r}(G)$ are adjacent whenever $|A \Delta B| = 2r$ and there is a perfect matching between $A \setminus B$ and $B \setminus A$ in G . This graph is a generalization of the token graph since $F_k(G) \simeq F_{k,1}(G)$. It is also a generalization of the Kneser graph $KG_{n,k}$, whose vertices are the k -subsets of an n -set, where two vertices A and B are adjacent whenever $A \cap B = \emptyset$. Observe that $KG_{n,k} \simeq F_{k,k}(K_n)$. Finally, let $F'_{k,r}(G)$ be the variant where instead we require that every edge is present between $A \setminus B$ and $B \setminus A$. Then again $F_k(G) \simeq F'_{k,1}(G)$ and $KG_{n,k} \simeq F'_{k,k}(K_n)$. The study of $F_{k,r}(G)$ and $F'_{k,r}(G)$ is an open line of research.

References

- [1] VINCENZO AULETTA, ANGELO MONTI, MIMMO PARENTE, AND PINO PERSIANO. A linear-time algorithm for the feasibility of pebble motion on trees. *Algorithmica*, 23(3):223–245, 1999. <http://dx.doi.org/10.1007/PL00009259>.
- [2] J. ADRIAN BONDY AND ROBERT L. HEMMINGER. Graph reconstruction—a survey. *J. Graph Theory*, 1(3):227–268, 1977. <http://dx.doi.org/10.1002/jgt.3190010306>.
- [3] SUL-YOUNG CHOI. On the maximal $\{0, 1, 2, \dots, t\}$ -cliques of $J(n, k)$. *Utilitas Math.*, 35:155–167, 1989.
- [4] MIKE DAVEN AND C. A. RODGER. The Johnson graph $J(v, k)$ has connectivity δ . In *Proc. 30th Southeastern International Conf. on Combinatorics, Graph Theory, and Computing*, vol. 139 of *Congr. Numer.*, pp. 123–128. 1999.
- [5] REINHARD DIESTEL. *Graph theory*, vol. 173 of *Graduate Texts in Mathematics*. Springer-Verlag, Berlin, 3rd edn., 2005. <http://diestel-graph-theory.com/index.html>.
- [6] TUVI ETZION AND SARA BITAN. On the chromatic number, colorings, and codes of the Johnson graph. *Discrete Appl. Math.*, 70(2):163–175, 1996. [http://dx.doi.org/10.1016/0166-218X\(96\)00104-7](http://dx.doi.org/10.1016/0166-218X(96)00104-7).
- [7] HENRY W. GOULD. *Combinatorial identities. A standardized set of tables listing 500 binomial coefficient summations*. Henry W. Gould, Morgantown, USA, 1972.
- [8] HEIKO HARBORTH. Number of odd binomial coefficients. *Proc. Amer. Math. Soc.*, 62(1):19–22 (1977), 1976. <http://dx.doi.org/10.2307/2041936>.
- [9] HANS RIYONO HO. Hamiltonicity of the graph $G(n, k)$ of the Johnson scheme. *Jurnal Informatika*, 3(1):41–47, 2007.
- [10] GLENN HURLBERT. A survey of graph pebbling. *Congressus Numerantium*, 139:41–64, 1999. <http://arxiv.org/abs/math/0406024>.
- [11] GLENN HURLBERT. Recent progress in graph pebbling. *Graph Theory Notes N. Y.*, 49:25–37, 2005.
- [12] FELIX P. MUGA II, JAIME D.L. CARO, HENRY N. ADORNA, AND GREG BAES. On the wide-diameter of the Johnson graph $J(n, k)$. *The Loyola Schools Review*, 1:77–88, 2001.

- [13] DONALD JACOBS AND BRUCE HENDRICKSON. An algorithm for two dimensional rigidity percolation: The pebble game. *J. Computational Physics*, 137(2):346–365, 1997. <http://dx.doi.org/10.1006/jcph.1997.5809>.
- [14] DONALD JACOBS AND MICHAEL F. THORPE. Generic rigidity percolation: The pebble game. *Phys. Rev. Lett.*, 75:4051–4054, 1995.
- [15] LIJUN JI. A new existence proof for large sets of disjoint Steiner triple systems. *J. Combin. Theory Ser. A*, 112(2):308–327, 2005. <http://dx.doi.org/10.1016/j.jcta.2005.06.005>.
- [16] GERHARD LARCHER. On the number of odd binomial coefficients. *Acta Math. Hungar.*, 71(3):183–203, 1996. <http://dx.doi.org/10.1007/BF00052108>.
- [17] JIA XI LU. On large sets of disjoint Steiner triple systems. I–VI. *J. Combin. Theory Ser. A*, 1983–1984.
- [18] CRIEL MERINO. The chip-firing game. *Discrete Mathematics*, 302(1-3):188–210, 2005. <http://dx.doi.org/10.1016/j.disc.2004.07.033>.
- [19] CHRISTOS H. PAPADIMITRIOU, PRABHAKAR RAGHAVAN, MADHU SUDAN, AND HISAO TAMAKI. Motion planning on a graph. In *Proc. 35th Annual Symp. on Foundations of Comput. Sci. (FOCS '94)*, pp. 511–520. IEEE, 1994. <http://dx.doi.org/10.1109/SFCS.1994.365740>.
- [20] FRANK RUSKEY. *Combinatorial Generation*. 2003. <http://www.1stworks.com/ref/RuskeyCombGen.pdf>.
- [21] CARLA SAVAGE. A survey of combinatorial Gray codes. *SIAM Rev.*, 39(4):605–629, 1997. <http://dx.doi.org/10.1137/S0036144595295272>.
- [22] JOHN E. SAVAGE. *Models of Computation: Exploring the Power of Computing*. Addison-Wesley, Boston, USA, 1997. <http://www.cs.brown.edu/~jes/book/home.html>.
- [23] RENZO SPRUGNOLI. Riordan array proofs of identities in Gould’s book, 2006. <http://www.dsi.unifi.it/~resp/GouldBK.pdf>.
- [24] LUC TEIRLINCK. A completion of Lu’s determination of the spectrum of large sets of disjoint Steiner triple systems. *J. Comb. Theory Ser. A*, 57(2):302–305, 1991. [http://dx.doi.org/10.1016/0097-3165\(91\)90053-J](http://dx.doi.org/10.1016/0097-3165(91)90053-J).
- [25] RICHARD M. WILSON. The exact bound in the Erdős-Ko-Rado theorem. *Combinatorica*, 4(2-3):247–257, 1984. <http://dx.doi.org/10.1007/BF02579226>.